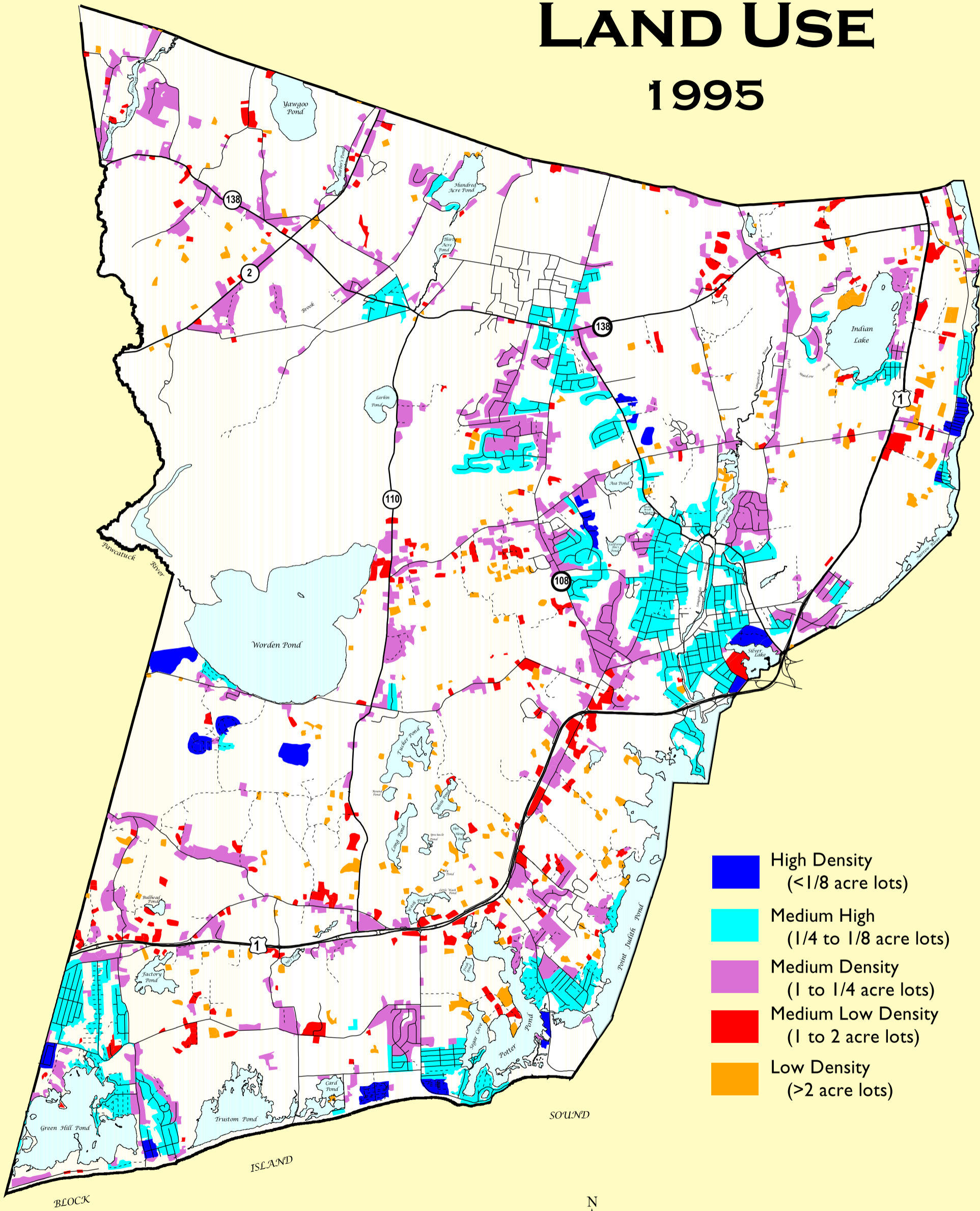


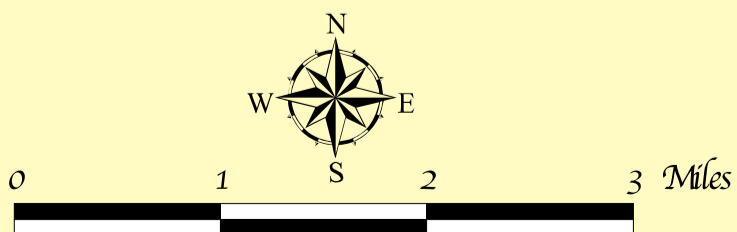
# Town of South Kingstown RESIDENTIAL LAND USE

## 1995



- High Density  
( $<1/8$  acre lots)
- Medium High  
( $1/4$  to  $1/8$  acre lots)
- Medium Density  
(1 to  $1/4$  acre lots)
- Medium Low Density  
(1 to 2 acre lots)
- Low Density  
( $>2$  acre lots)

Source of Data:  
Rhode Island Geographic Information System  
Land Use / Land Cover Data

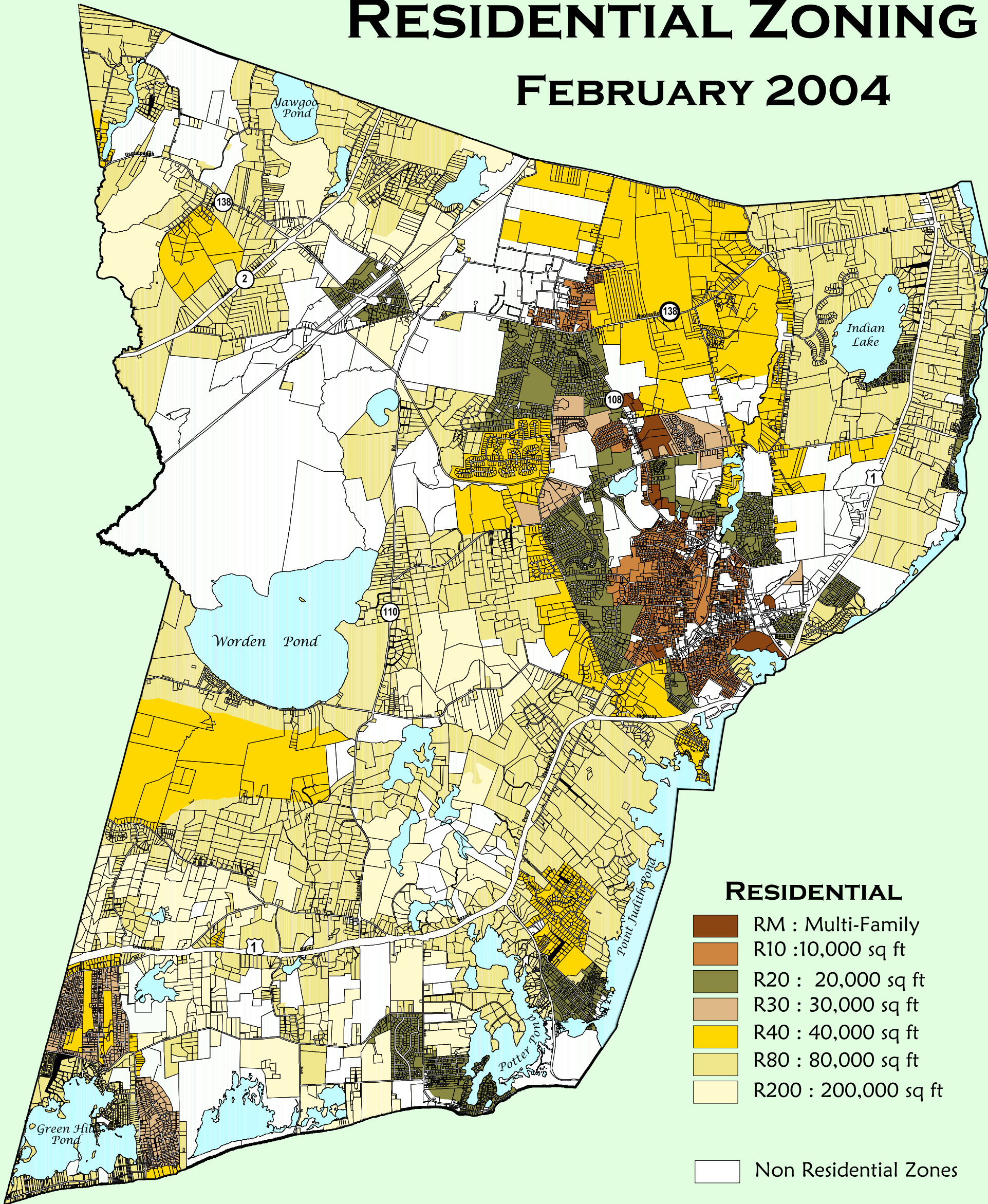


Geographic  
Information  
System

### Map #1

# Town of South Kingstown RESIDENTIAL ZONING

## FEBRUARY 2004



### RESIDENTIAL

- RM : Multi-Family
- R10 : 10,000 sq ft
- R20 : 20,000 sq ft
- R30 : 30,000 sq ft
- R40 : 40,000 sq ft
- R80 : 80,000 sq ft
- R200 : 200,000 sq ft

Non Residential Zones



Note: This is not the official Zoning map for the Town of South Kingstown. It is provided for illustrative purposes only.

Adopted: May 10, 1999  
Revisions through February 2004



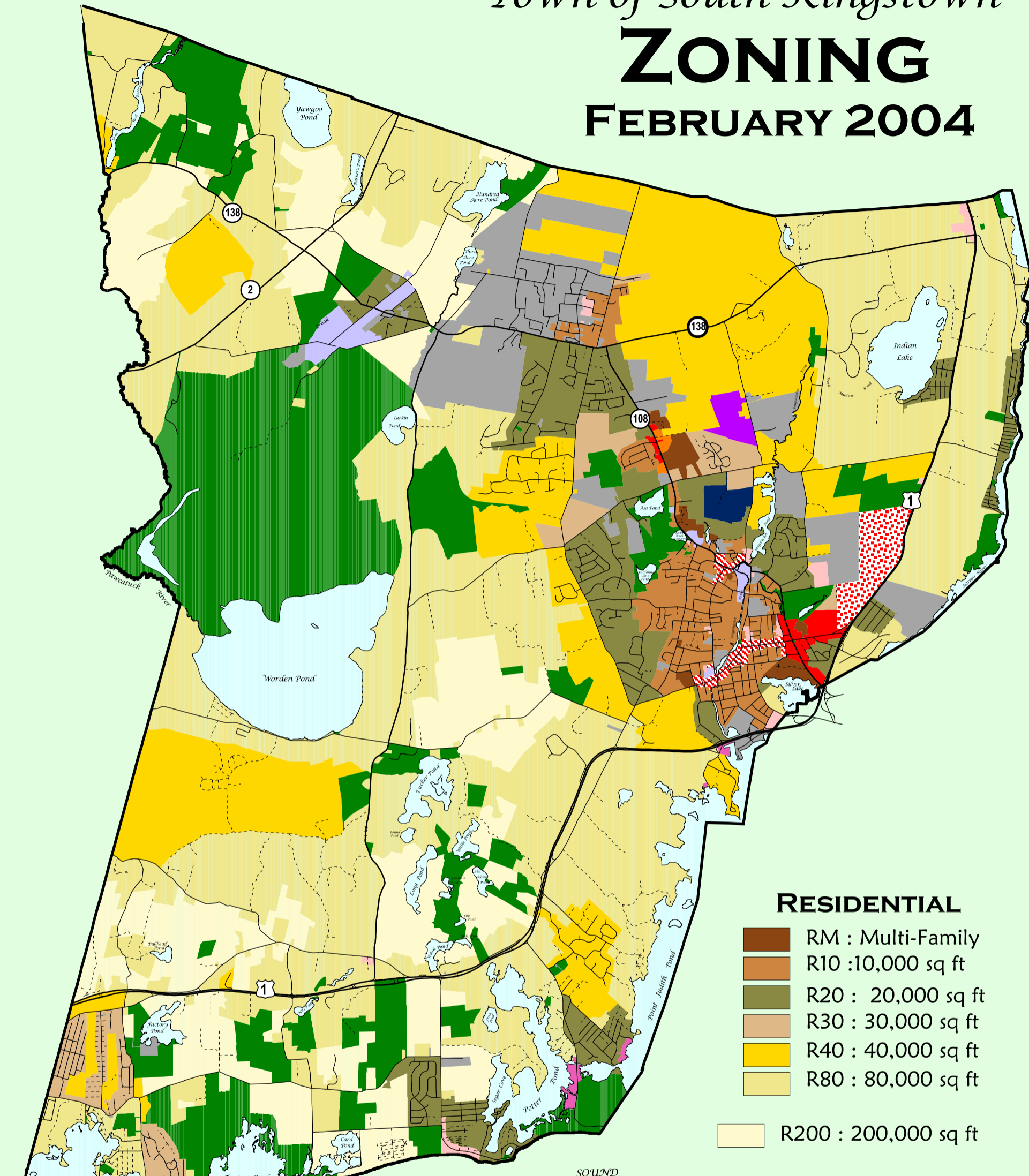
Geographic Information System  
cpb PL04-44 11/04

## Map #2

# Town of South Kingstown

# ZONING

## FEBRUARY 2004



### RESIDENTIAL

- RM : Multi-Family
- R10 : 10,000 sq ft
- R20 : 20,000 sq ft
- R30 : 30,000 sq ft
- R40 : 40,000 sq ft
- R80 : 80,000 sq ft
- R200 : 200,000 sq ft

### ISLAND INDUSTRIAL

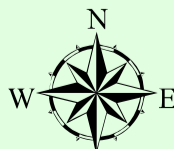
- IND-1 : Industrial 1
- IND-2 : Industrial 2
- IND-3 : Industrial 3
- OS : Open Space
- GI : Government and Institutional

### COMMERCIAL

- CH : Highway
- CD : Downtown
- CN : Neighborhood
- CW : Waterfront
- MU : Mixed Use
- SMD : Special Management District

Note: This is not the official Zoning map for the Town of South Kingstown. It is provided for illustrative purposes only.

Adopted: May 10, 1999  
Revisions through February 2004



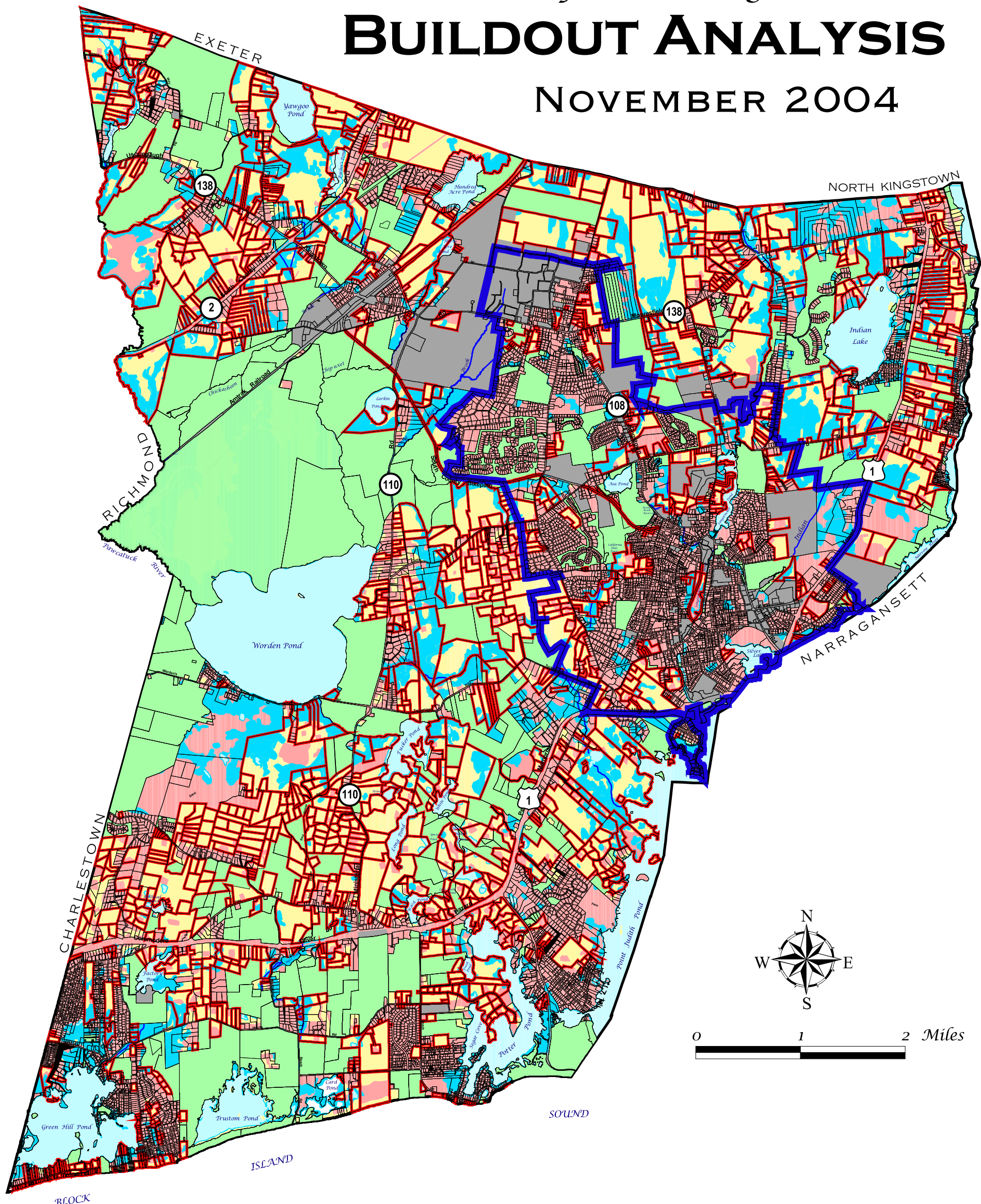
Geographic Information System





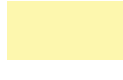
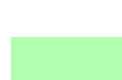

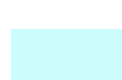
## Map #3

Town of South Kingstown

# BUILDOUT ANALYSIS

NOVEMBER 2004



	Core Area		Parcels with Buildable Conforming Acreage
	Developed		Zoning Constraints GI, Industrial, CH
	Vacant Developable		Protected Open Space
	Wetlands and High Water Table Soils		Lakes and Ponds

Sources of Data:  
 Developed and Vacant: 1995 RIGIS Land Use, updated with new subdivisions and roads  
 Core Area, Zoning Constraints, Protected Open Space: SKGIS and Planning Department  
 Wetlands and High Water Table Soils: RIGIS  
 Parcels as of June 2004  
 Conforming Acreage: Based on Vacant Acreage compared to minimum lot size

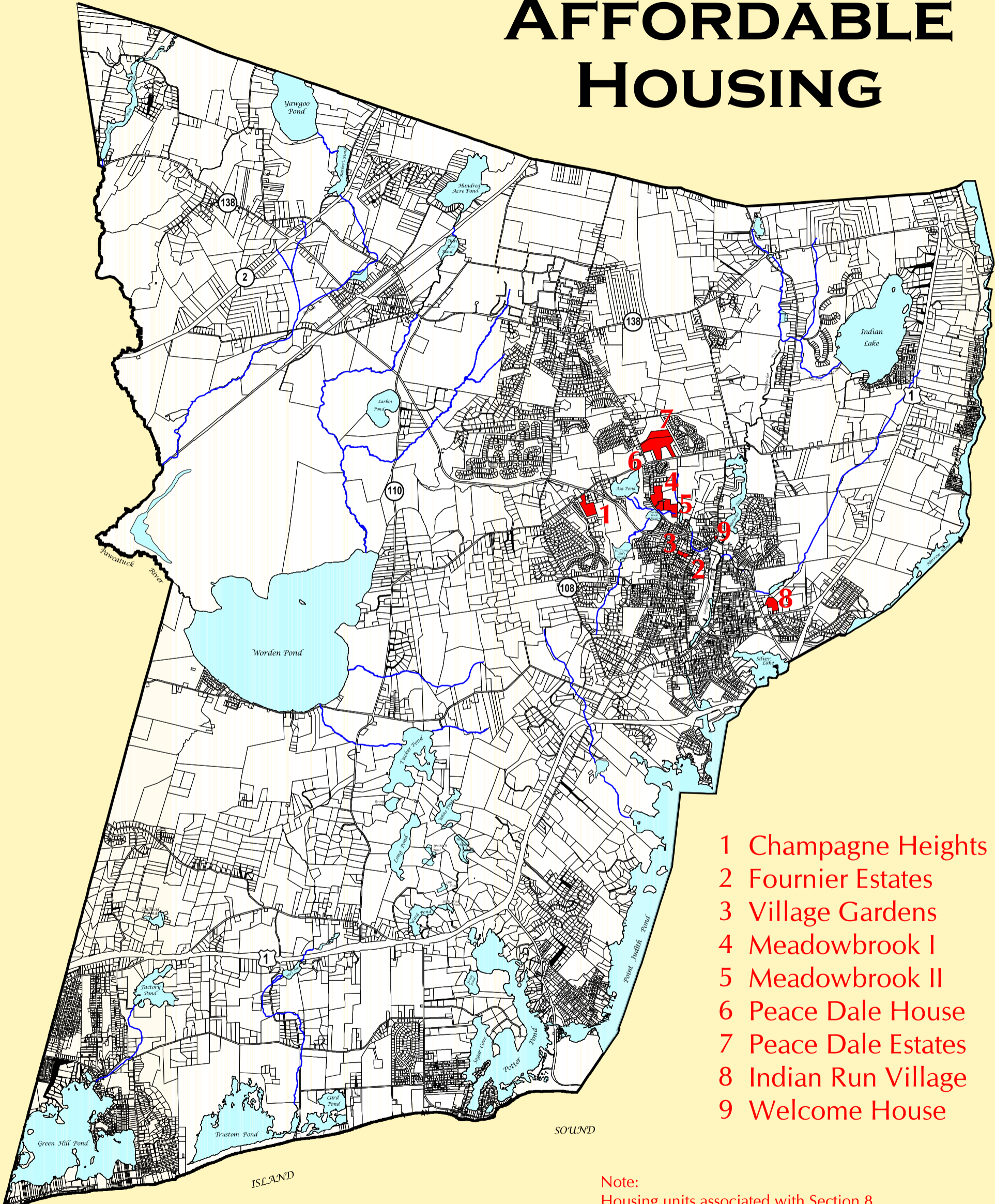


Geographic Information System

Map #4

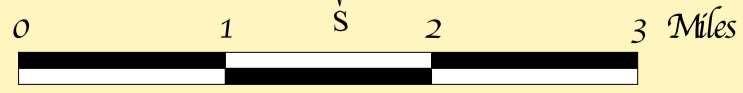
# Town of South Kingstown

## EXISTING AFFORDABLE HOUSING



- 1 Champagne Heights
- 2 Fournier Estates
- 3 Village Gardens
- 4 Meadowbrook I
- 5 Meadowbrook II
- 6 Peace Dale House
- 7 Peace Dale Estates
- 8 Indian Run Village
- 9 Welcome House

Note:  
Housing units associated with Section 8  
vouchers and group homes are not depicted.



Source of Data:  
Barbara Sokoloff and Associates

Parcel Boundaries: 2002 Tax Assessor Maps



Geographic Information System

Map #5



*Town of South Kingstown*

**SUBSTANTIAL HOUSING REHABILITATION /  
CONVERSION TARGETED CORRIDORS MAP**



500 250 0 500 1,000 Feet

Source of Data:  
Parcel Boundaries: September 2004 Tax Assessor Maps  
Aerial Photo: April 1997

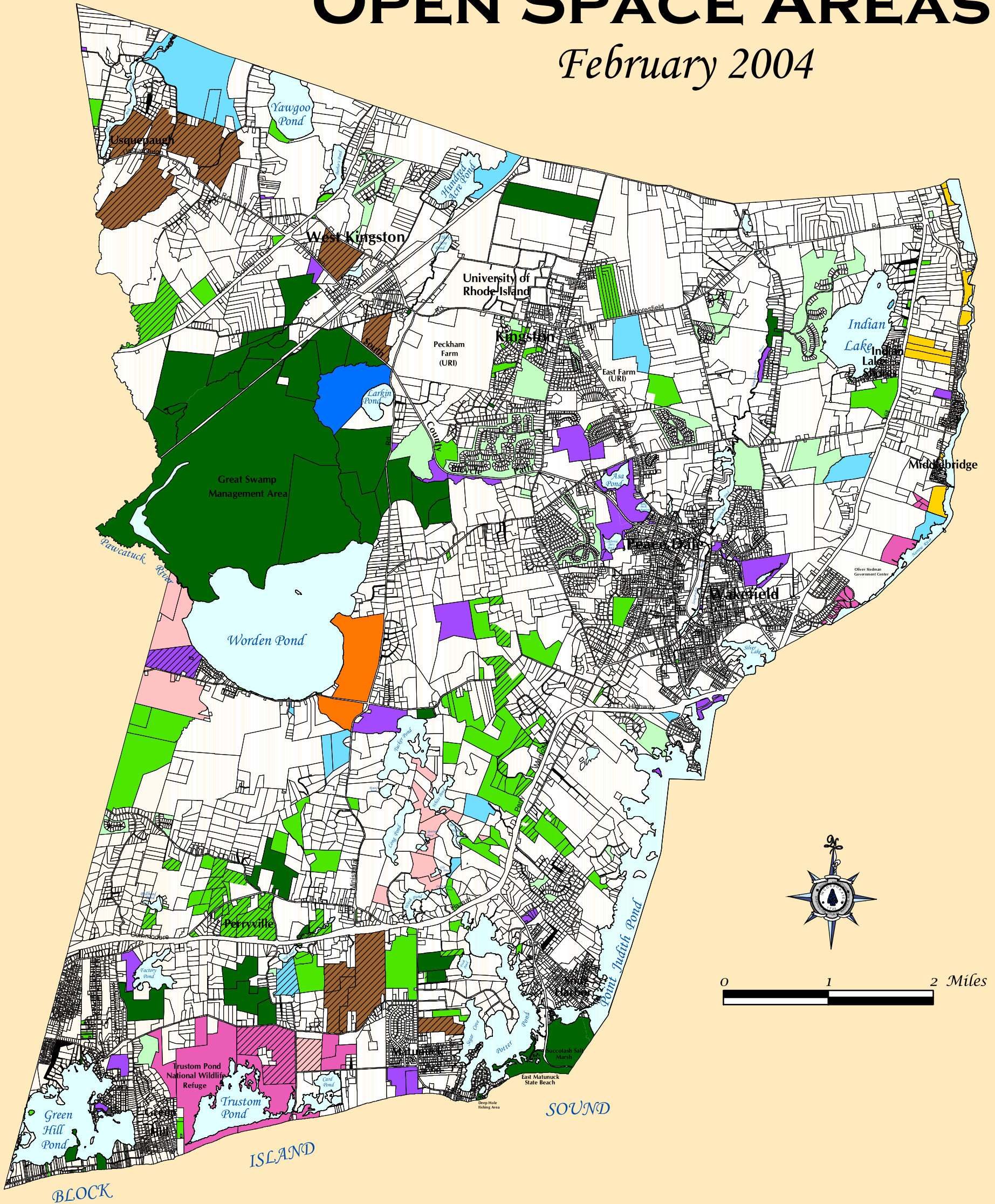


*Geographic  
Information  
System*

**Map #6**

cpb PL04-48 11/04

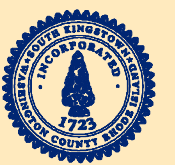
Town of South Kingstown  
**OPEN SPACE AREAS**  
 February 2004



- |   |   |                       |
|---|---|-----------------------|
| Agricultural Land Preservation Commission | Audubon Society of Rhode Island                     | Protected by Easement |
| Boy Scouts of America                     | The Nature Conservancy                              | Lakes and Ponds       |
| Girl Scouts of America                    | Town of South Kingstown                             |                       |
| Narrow River Land Trust                   | Rhode Island Department of Environmental Management |                       |
| South Kingstown Land Trust                | US Fish and Wildlife Service                        |                       |
|   | Private / Other                                     |                       |

Data Sources:  
 Parcel Boundaries: January 2004 Tax Assessor Maps  
 Open Space: Planning Department and South Kingstown Geographic Information System

Many Open Space properties are not open to the public. Contact property owner for more information.



Geographic Information System

cpb PL04-11 3/04